

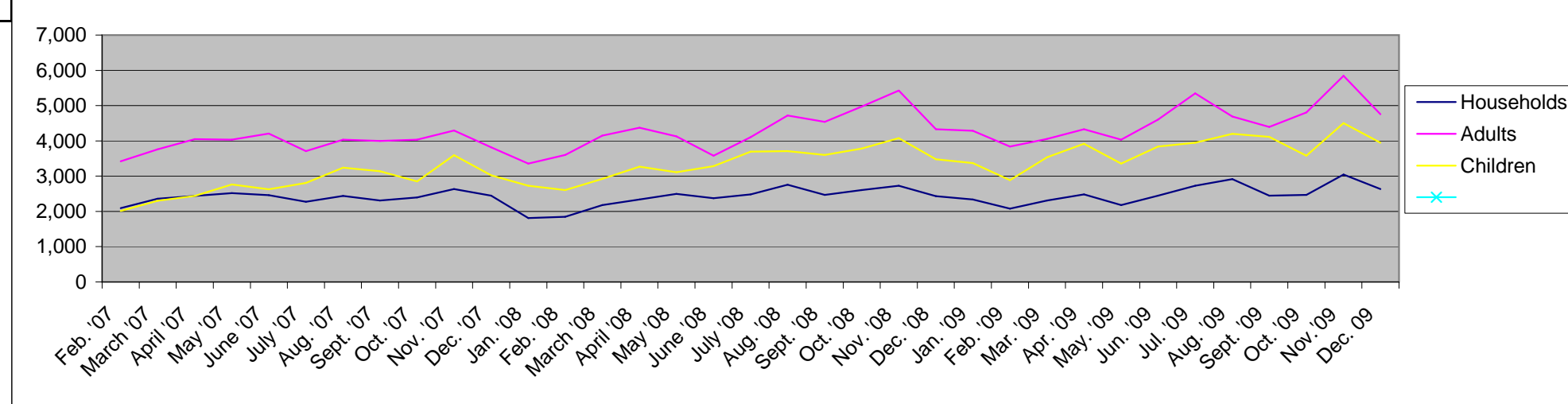


Brown County UW-Extension Office
 Wisconsin Nutrition Education Program
 1150 Bellevue Street
 Green Bay, WI 54302-2259

2007-2009 Pantry Usage Trends Graph

Food & Hunger Network
 P.O. Box 2165
 Green Bay, WI 54306-2165

	Jan. '07	Feb. '07	March '07	April '07	May '07	June '07	July '07	Aug. '07	Sept. '07	Oct. '07	Nov. '07	Dec. '07	Jan. '08	Feb. '08	March '08	April '08	May '08	June '08	July '08	Aug. '08	Sept. '08	Oct. '08	Nov. '08	Dec. '08	Jan. '09	Feb. '09	Mar. '09	Apr. '09	May '09	Jun. '09	Jul. '09	Aug. '09	Sept. '09	Oct. '09	Nov. '09	Dec. '09
Households	2,373	2,092	2,360	2,436	2,515	2,462	2,270	2,439	2,308	2,398	2,635	2,445	1,812	1,851	2,176	2,337	2,499	2,377	2,479	2,760	2,466	2,608	2,727	2,433	2,340	2,078	2,308	2,486	2,181	2,449	2,729	2,915	2,445	2,465	3,048	2,633
Adults	3,916	3,421	3,758	4,046	4,033	4,206	3,706	4,033	4,001	4,031	4,295	3,821	3,353	3,604	4,147	4,373	4,127	3,579	4,103	4,719	4,539	4,975	5,430	4,330	4,285	3,839	4,059	4,331	4,035	4,605	5,349	4,688	4,393	4,808	5,842	4,755
Children	2,470	2,014	2,300	2,439	2,761	2,630	2,809	3,237	3,140	2,850	3,597	3,026	2,731	2,603	2,926	3,272	3,107	3,283	3,696	3,709	3,600	3,784	4,074	3,475	3,373	2,885	3,533	3,915	3,353	3,839	3,950	4,199	4,114	3,578	4,505	3,946



Food Pantries Included:
 7th Day Community Service Center
 AIDS Resource Center
 Calvary Lutheran
 DePere Christian
 Denmark Community Cupboard
 1st Presbyterian
 1st United Methodist
 Oneida Pantry

Pulaski Community Pantry
 Resurrection Lutheran
 St. Bernards
 St. John Lutheran
 St. Patrick
 St. Willebrord
 Salvation Army
 Trinity Lutheran

Food Pantries Not Included in the Pantry Usage Trend Data Include:
 The Giving Tree
 Grace Lutheran
 St. Marks
 St. Peter and Paul
 Manna for Life
 Pauls Pantry

Analysis:

Food pantry usage trends are affected by factors such as transportation issues in cold weather months, obtaining food from other community resources near the holidays and pantries not having enough food donations, which can lead to reduced hours of operation. The following data contains 3 years of pantry trends. *Note: Oneida was closed in October 2009 for 1 month, The Giving Tree was closed in June 2009 due to no access in the school where the pantry is located, and St. John's was affected by a lack of food to distribute and closed for a month in 2009, as well.*